



Nor-Marine



Providing solutions
through partners



Nor-Marine

Nor-marine is a leading independent technical services, equipment and project management agency for the marine and offshore industry in Shanghai, China.

Through our globally sales network we provide a wide range of products to new-building market world wide.

Our desire as a Norwegian trading company is to supply excellent products to fair prices into the market. Excellent products mean excellent solutions,-taking the whole lifecycle of the product into account.

By working close to trusted Norwegian and European manufactory companies, Nor-marine is able to supply various of marine and offshore equipments to new-building as well as retrofit projects.

We hope you find it worthwhile to spend some time studying our catalogue, and hopefully you will find our products and partners worth a try. We will, as a token of our gratitude, do our outmost to serve you the best we can.

Ship power battery system

Battery Module

- Standardized modules - easy to combine different voltage and capacity.
- Fully automated production method (laser welding) - quality controllable.
- Guarantees thermal balance inside the module and improves life.
- Independent over temperature protection monitoring.
- Fulfill the CCS requirement.

Battery Pack

- Standardized design - easy to combine.
- Automated production method.
- High safety - meets all battery abuse tests.
- Good environmental adaptability - vibration, salt spray, humid or warm environment, IP67(waterproof).
- Fulfill the CCS requirement.



Application

4000HP electric port tug / 64TEU electric container vessel / Wuhan Reception ship 'Donghu'
 WuHan ChangJiang ferry 'Junlv' / Nanjing 'FuZi' Temple tourist boat / Pearl River 'Blue Dolphin'
 TianChi sightseeing boat / Norway Fishing Boat and so on.





Products and Services



MT DP 2 on M/V Bourbon Mistral



- Dynamic Positioning (DP)
- Integrated Bridge System (IBS)
- MT C-Link Antenna Communication
- VOIP (Telephone Systems & Services)
- Electronic Navigational Chart (ENC)
- Weather Information Service
- Remote Diagnostics & Monitoring

Real Time Data Streaming



MT C-Link Antenna Communication



MT IBS on F/T Pacific Glacier



MT DP 3 on M/V Island Wellserver

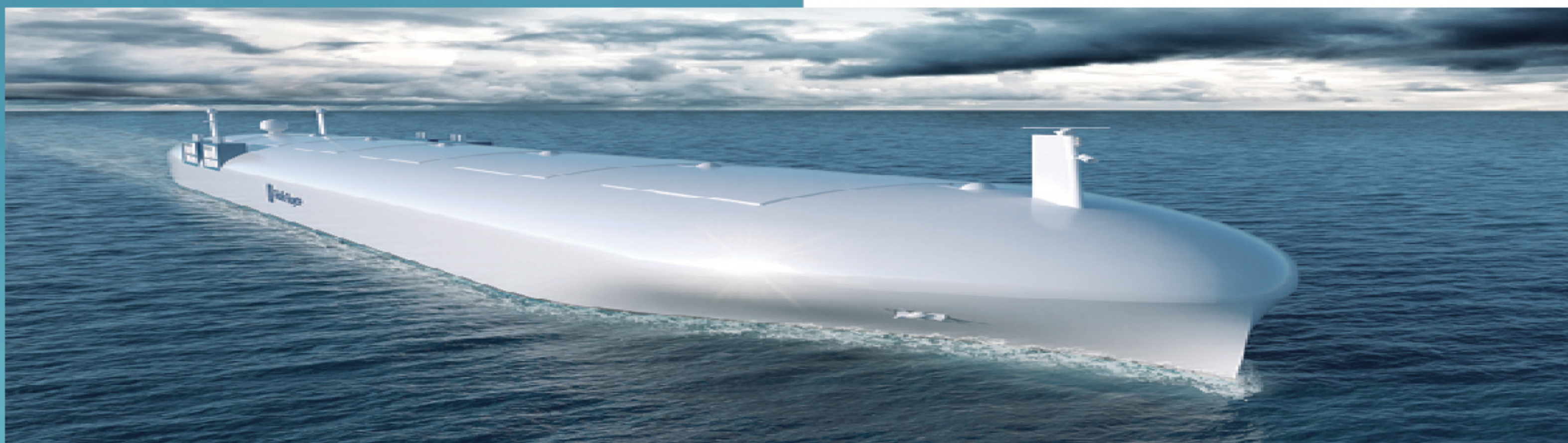


MT IBS on M/V Geowave Voyager

www.marine-tehnologies.com

GUIDANCE MARINE

A WÄRTSILÄ COMPANY



The first targetless laser position reference sensor

SCENESCAN
Positioning Technology From
GUIDANCE

- Additional independent DP reference sensor
- No target required
- Designed for close proximity
- No prisms, no maintenance
- Automatic reference point selection



SceneScan: A new sensor that doesn't use reflector targets. It scans and tracks the environment.



Applications

SceneScan is suitable for applications which use fixed structures such as:

- Platform, offshore and multipurpose supply vessel operations
- Jack-up rigs
- Accommodation barge operation
- Crew boats station-keeping
- Heavy lift activities
- Dive and ROV support
- Fish farms
- Short range operations



Expert in Positioning sensors

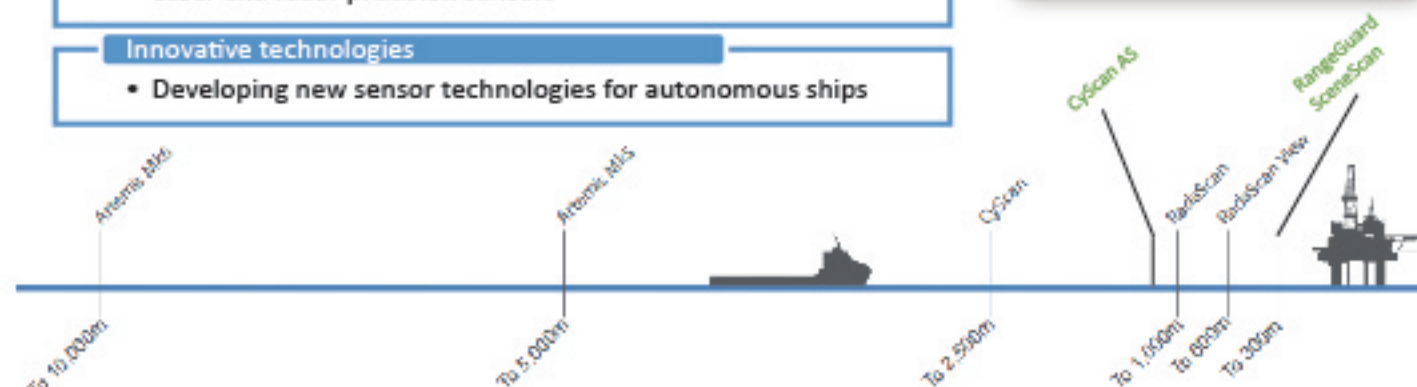
- Design and manufacture local position reference sensors (PRS) for vessels in the oil industry

Leading sensor manufacturer and designer

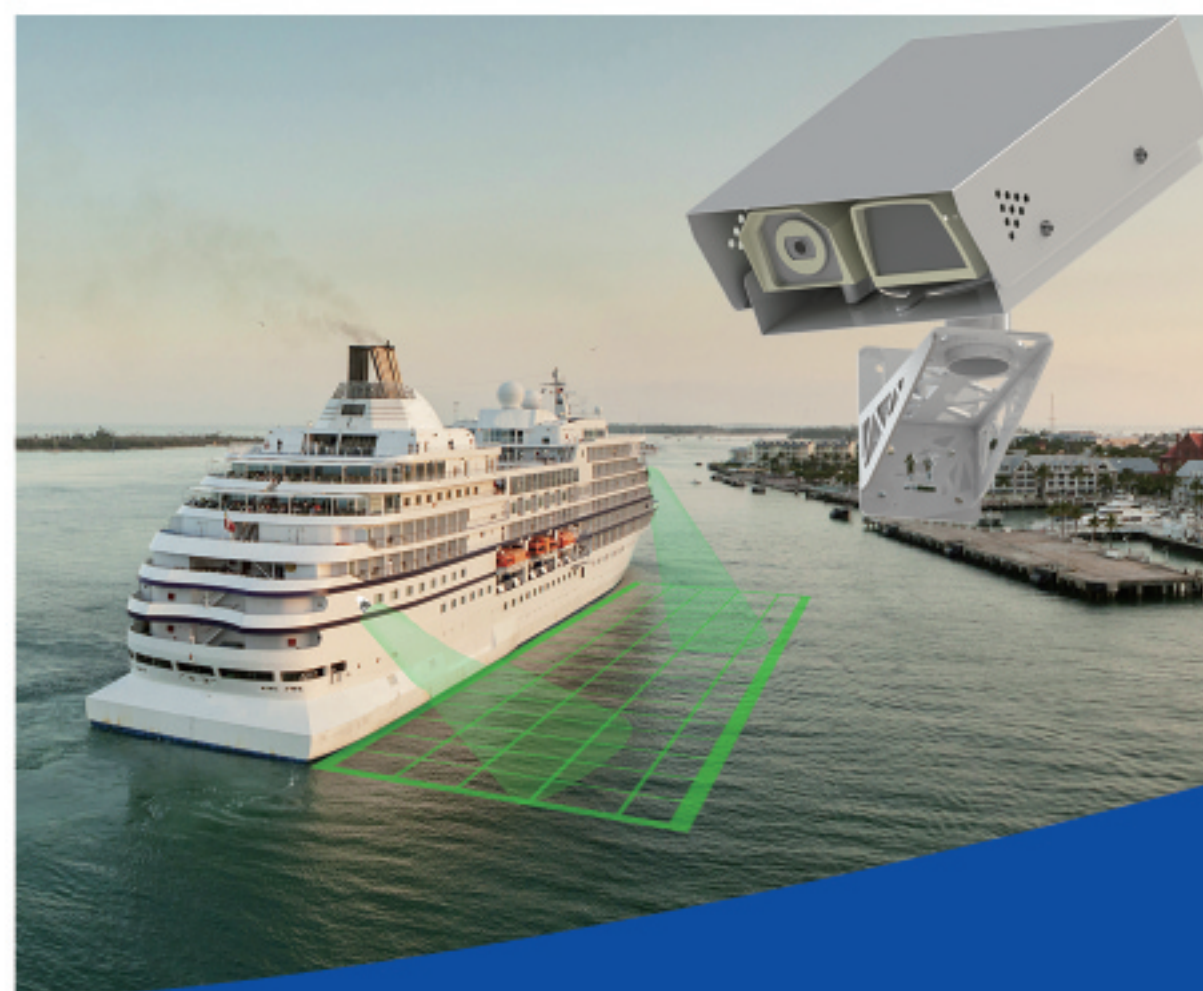
- Laser and radar precision sensors

Innovative technologies

- Developing new sensor technologies for autonomous ships



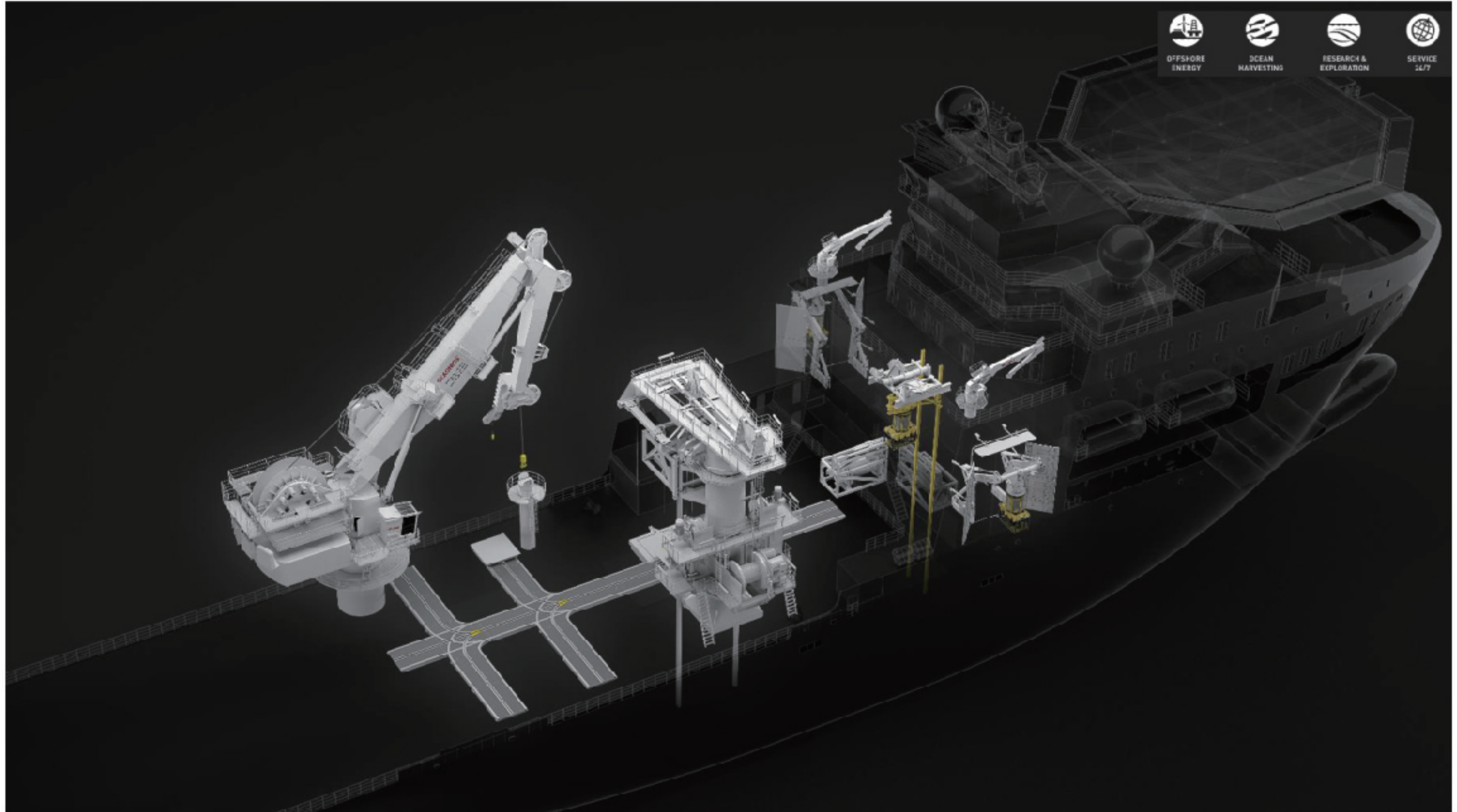
Guidance Marine built on this expertise and have developed a range of laser and microwave position reference sensors for the marine industry. These position reference have been used in the Oil & Gas, Naval, and commercial sectors and all rely on the traditional mechanism of a sensor making measurement from a dedicated "target" which is a reference point. The systems Guidance manufacture include CyScan, RadaScan, RadaScan View, RangeGuard, and Artemis.





SEAONICS™

-your first choice in specialized handling technologies



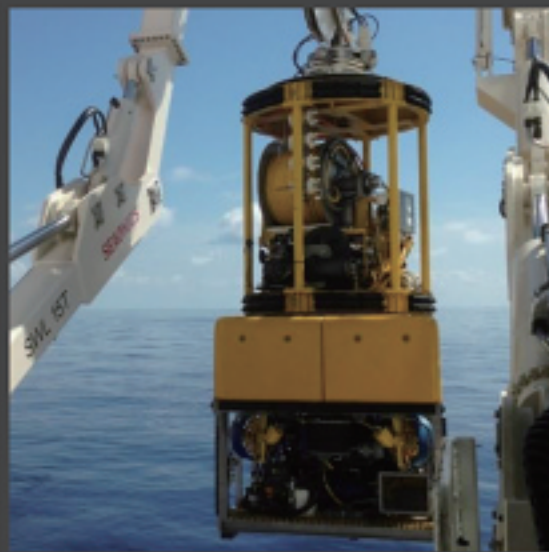
Supplier of lift & handling technology solutions.
Complete system competence is covered in-house.
More than 30 years experience in winch handling systems.



Module handling



Cranes



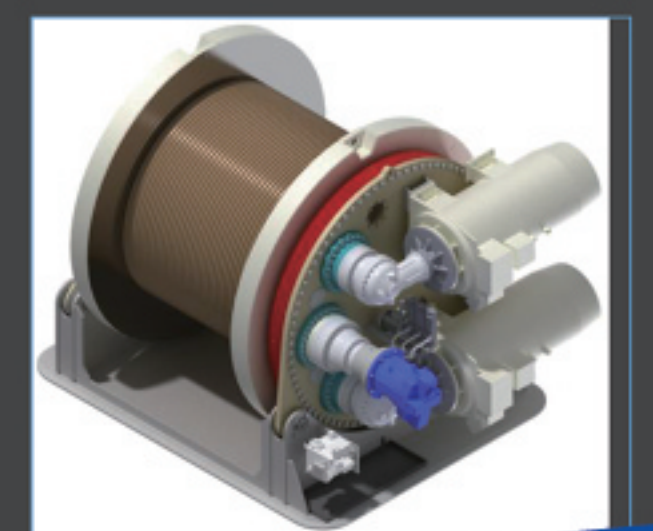
LARS



Compact LARS



Winches





OPTIMAR



OPTIMAR Solution

New automatic pump system for continuous pumping of trawl.

Daily raw pumping capacity up to 2000 ton/24 hour

Semi Automatic Weighing and Batching

Automatic Freezing

Automatic Boiling

Automatic Packing

Automatic Palletizing

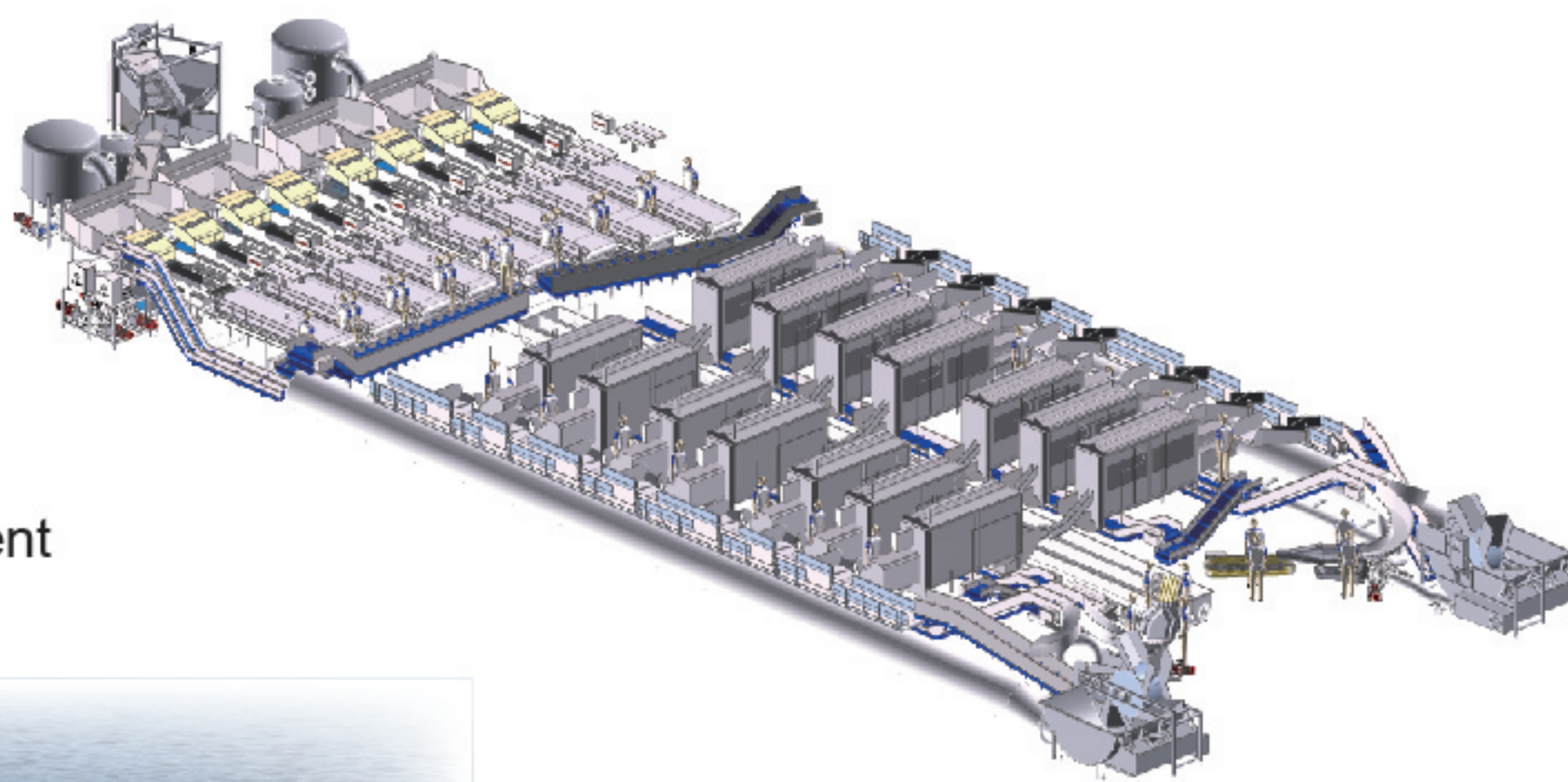
Weighing and batching

Project management

Optimar control system

Optimar factory project management

Optimar instalation





SCANTROL
AHC



A game changer that makes AHC affordable

- For smaller vessels
- For all the winches and cranes for use for your subsea work

Includes all the tools you need to make it work with your winch or crane

Contact the Scantrol team for more information

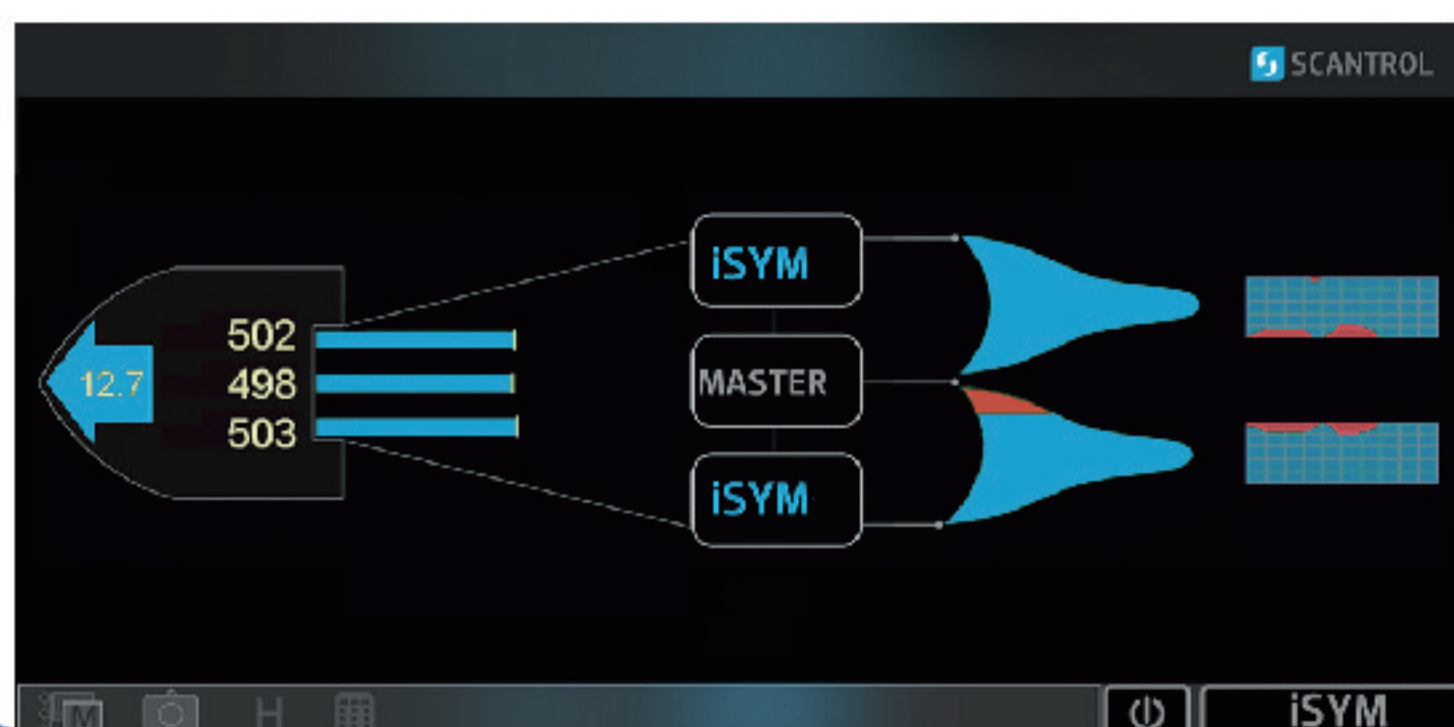
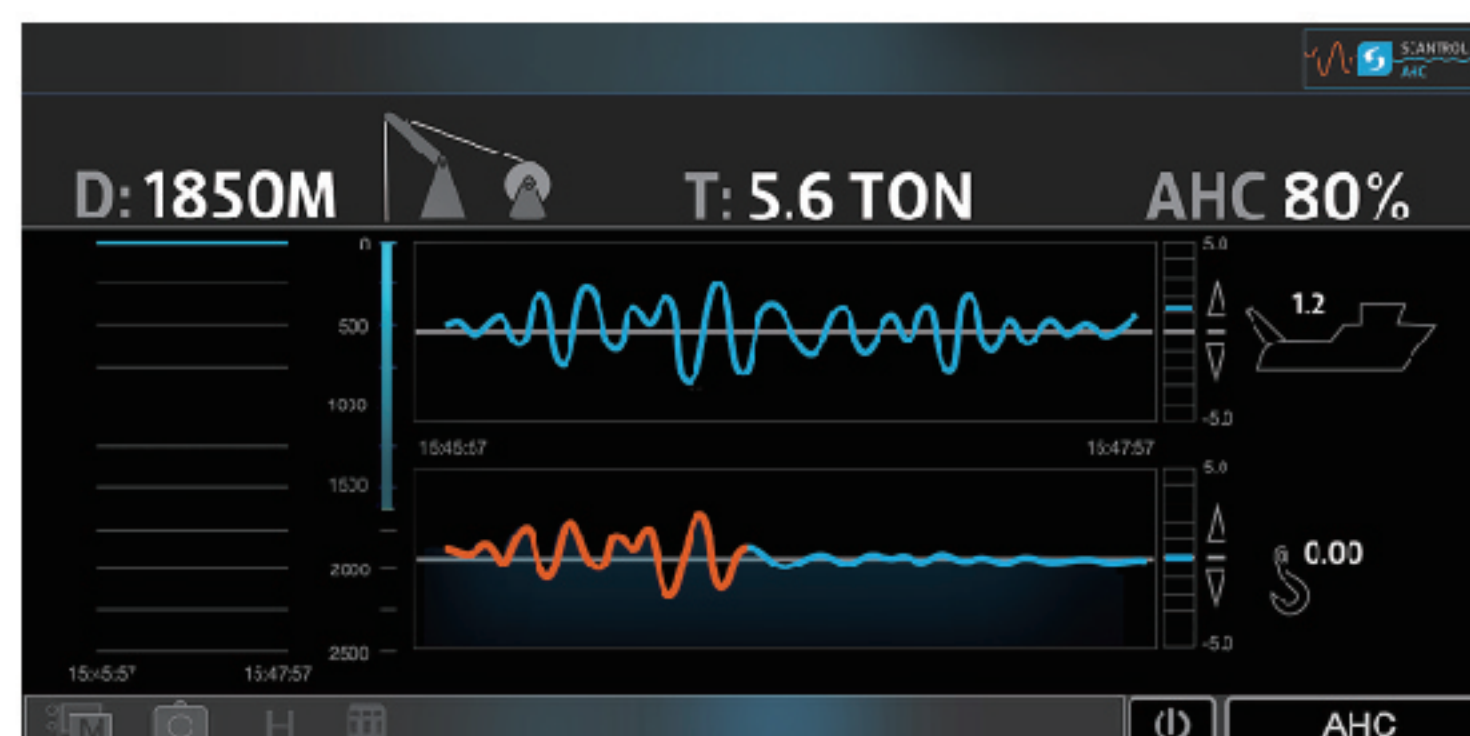


+47 55 30 15 15
AHC@scantrol.com
www.scantrol.com

Scantrol AS
Sandviksboder 1c
5035 Bergen NORWAY

Scantrol supplies modern and proven control systems for winches and cranes to Marine and Offshore applications. Scantrol has more than 30 years of experience with control systems. More than 1100 vessels are equipped with Scantrol systems.

mTrack Includes all the tools you need to make AHC work with your winch or crane and can be used with both new and existing winches. mTrack will increase operational time window and minimize weather related downtime for the vessel. With mTrack the operator will have precise control of the load also in rough sea conditions,

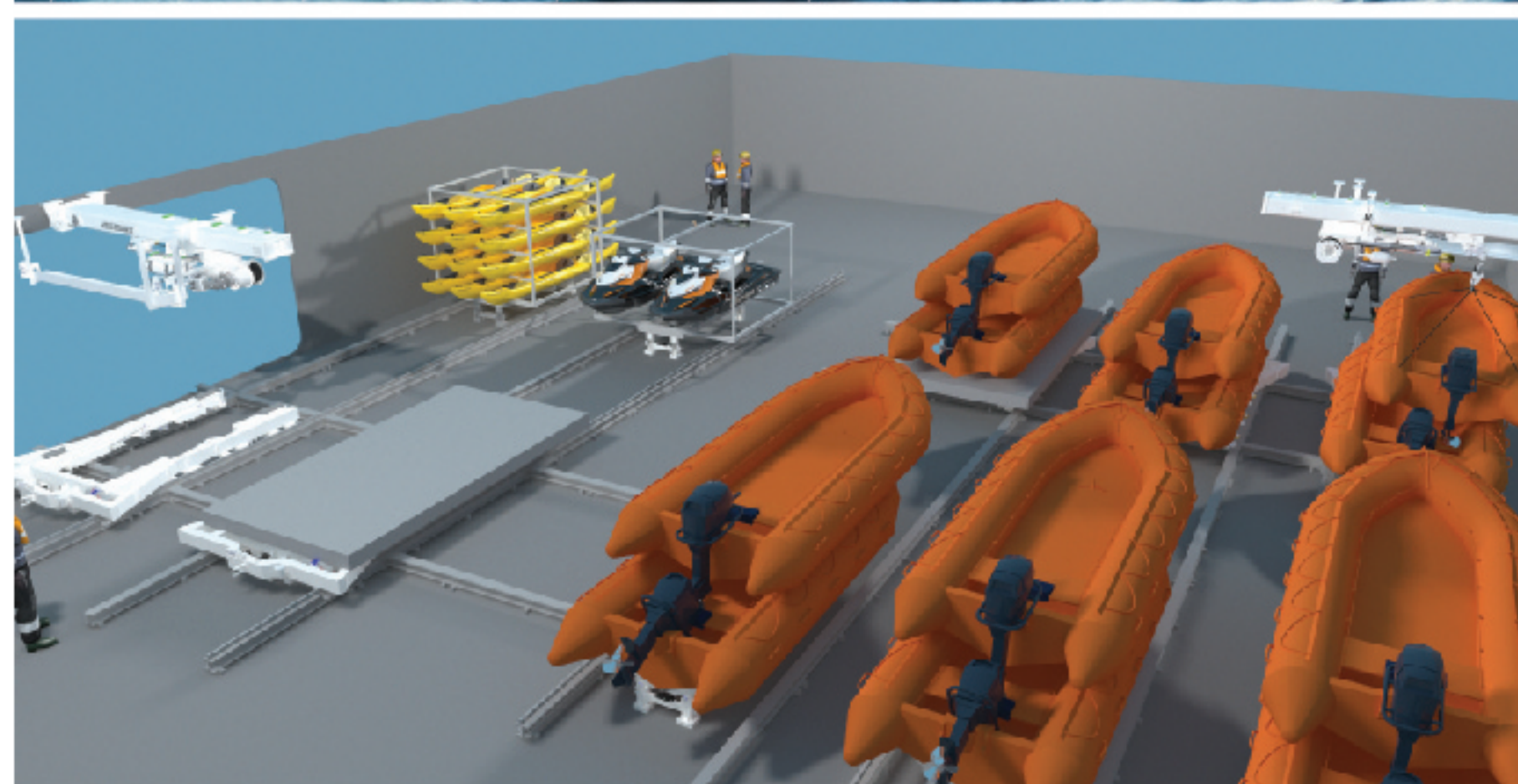


iSYM Autotrawl focuses on the trawl

iSYM Autotrawl functionality is developed in close cooperation with experienced fishermen from all over the world. Our control systems can be used with electric and hydraulic winches. Scantrol also offers upgrade of existing systems.



Safe boat
handling for life



Vestdavit is the first choice for navies, coastguards, seismic and expedition cruise operators who need to launch and recover boats on board ships working in tough environments.

www.vestdavit.no

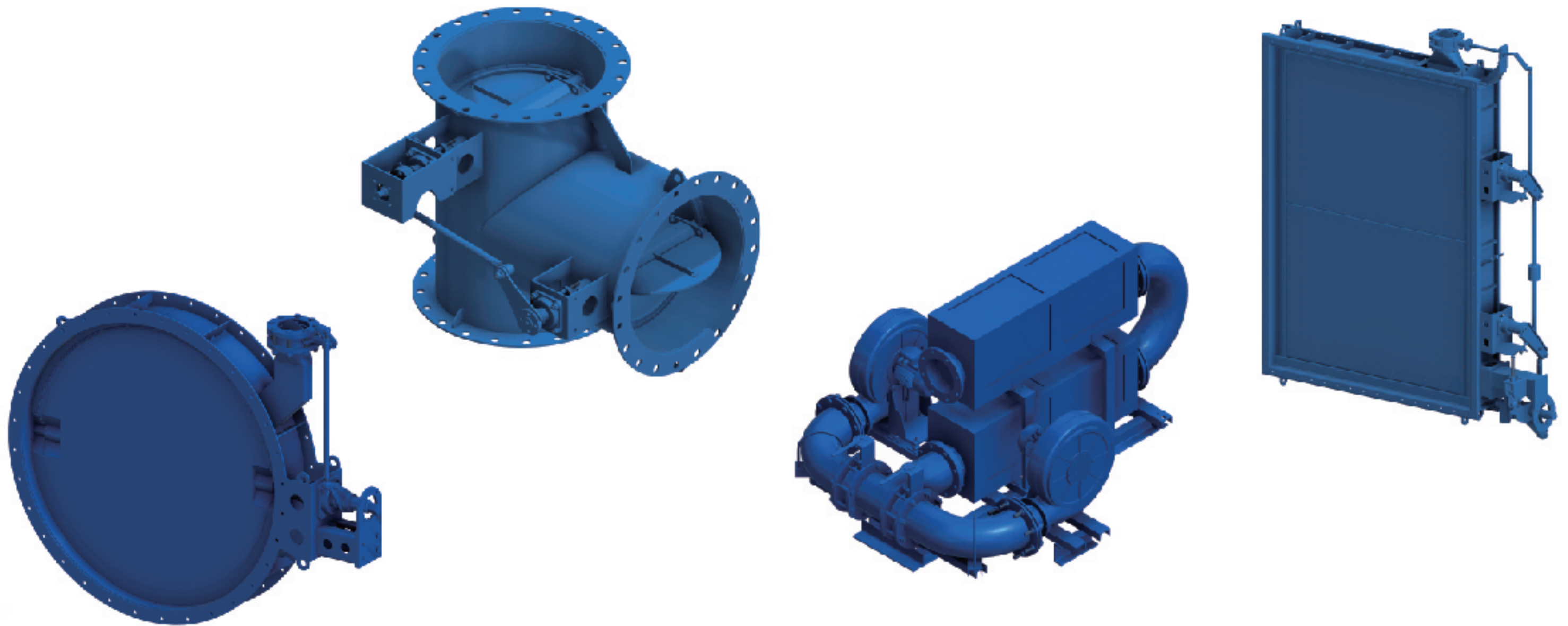


MissionEase
multi-boat handling system



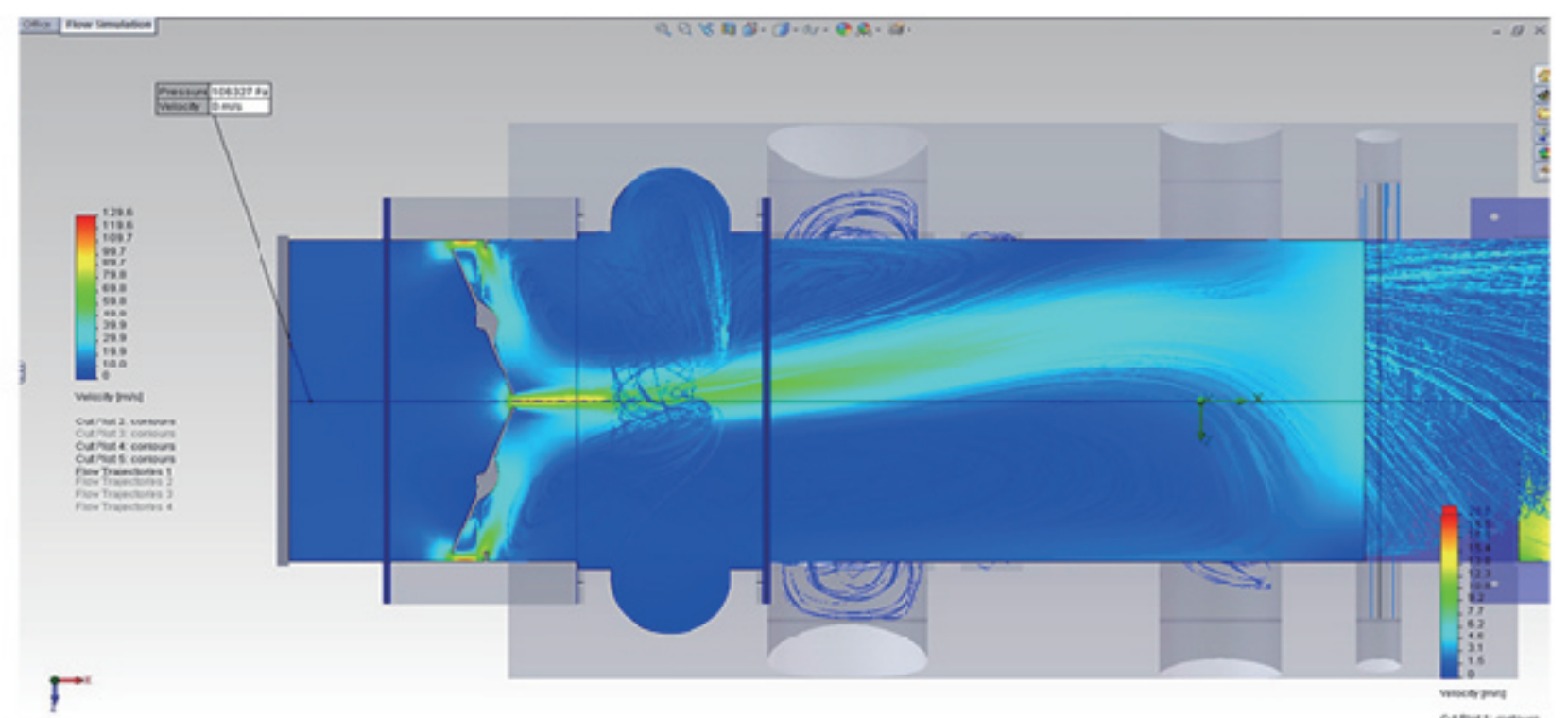
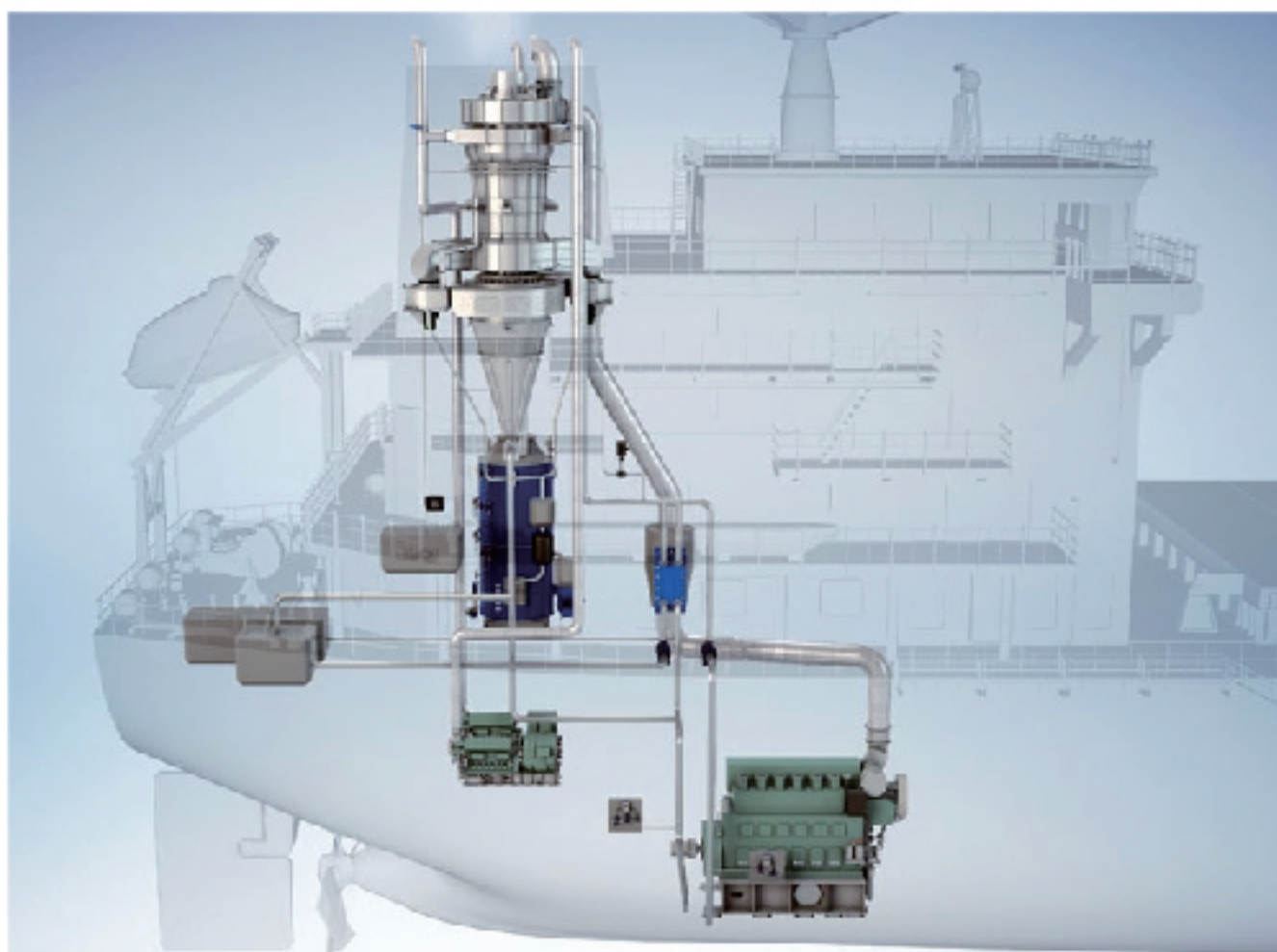
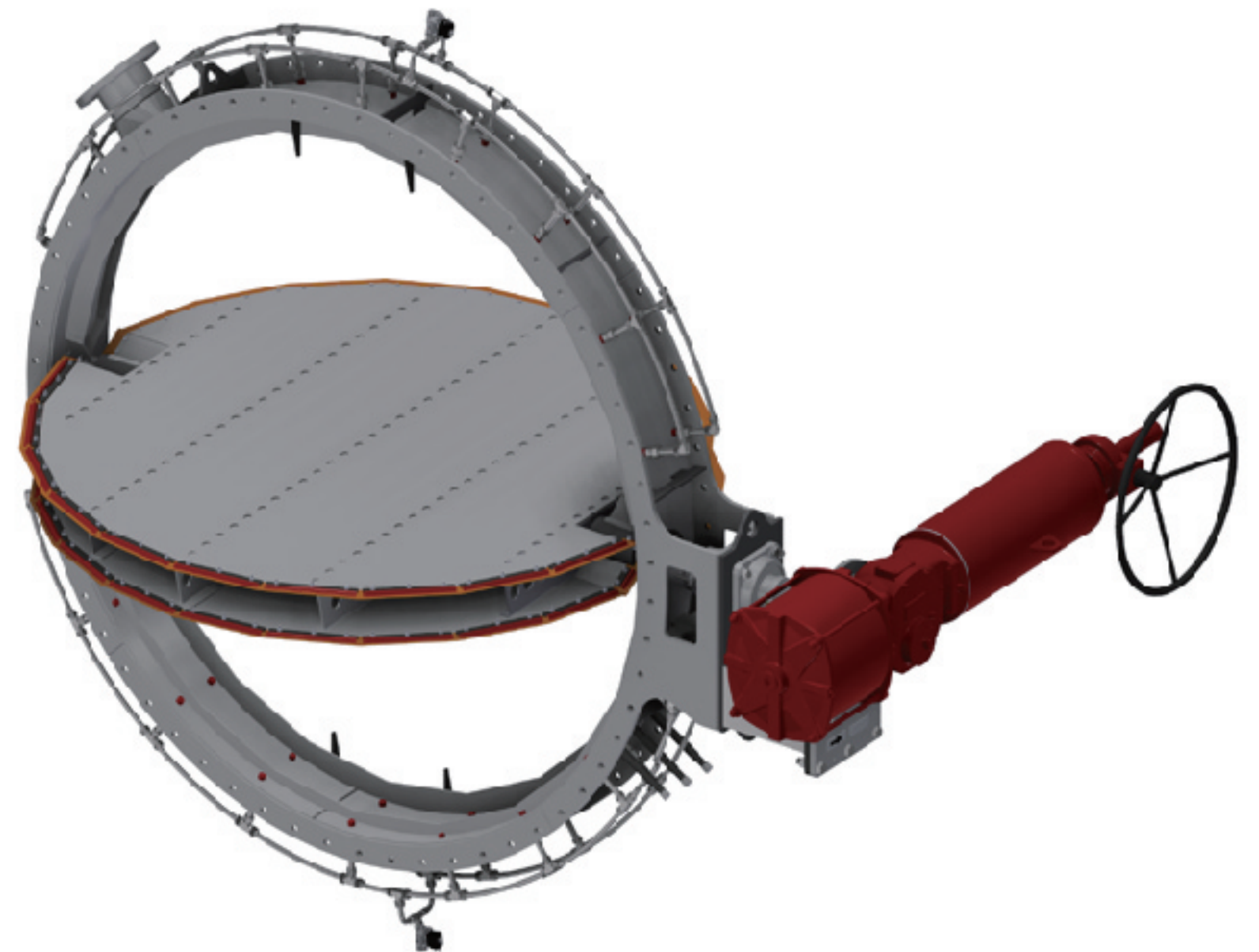


dsM



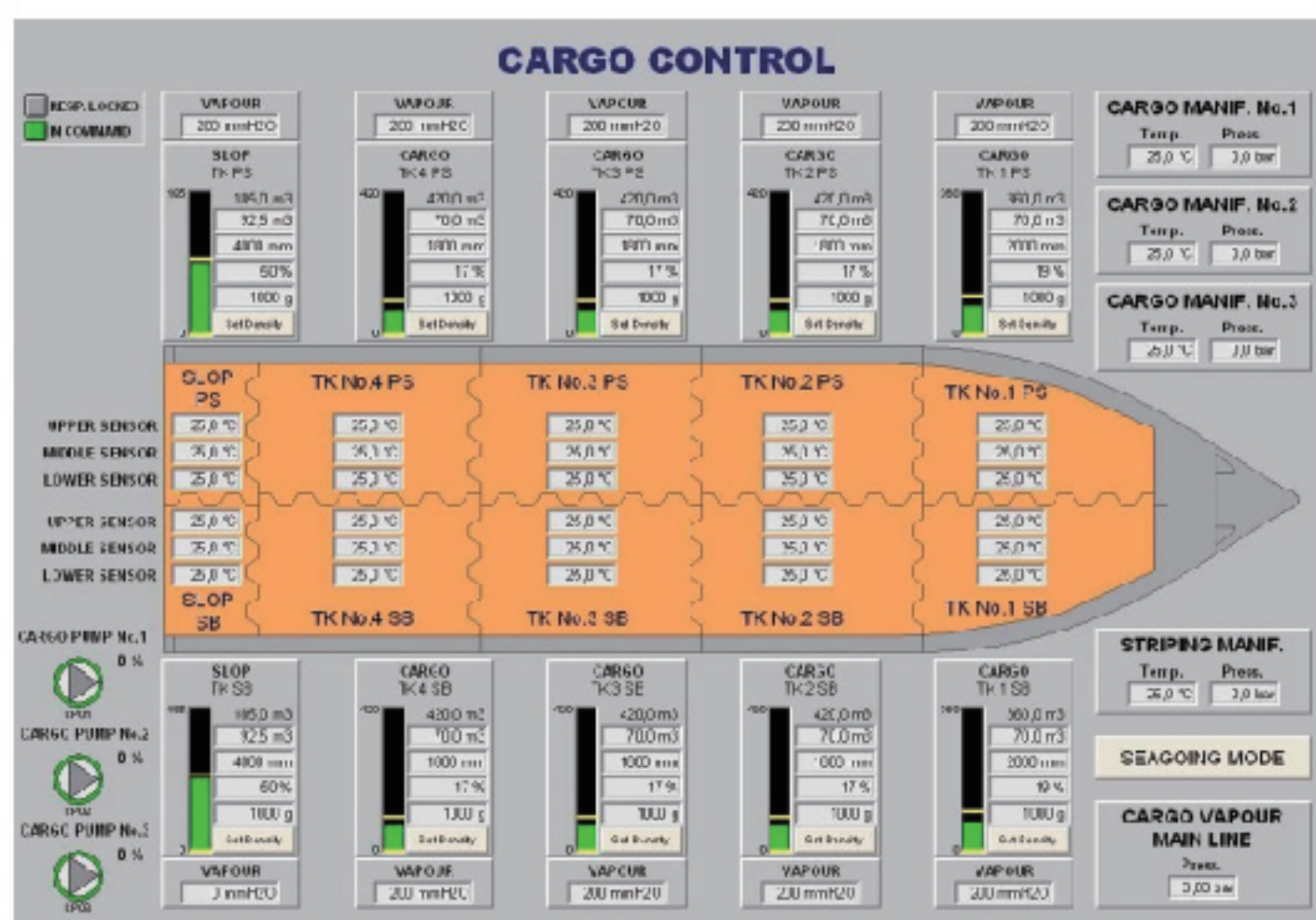
DSM is an engineering company
Team of specialist with 12 years of experience

High alloy sealing
Self-cleaning
Small leakage
High performance
Well-fitted

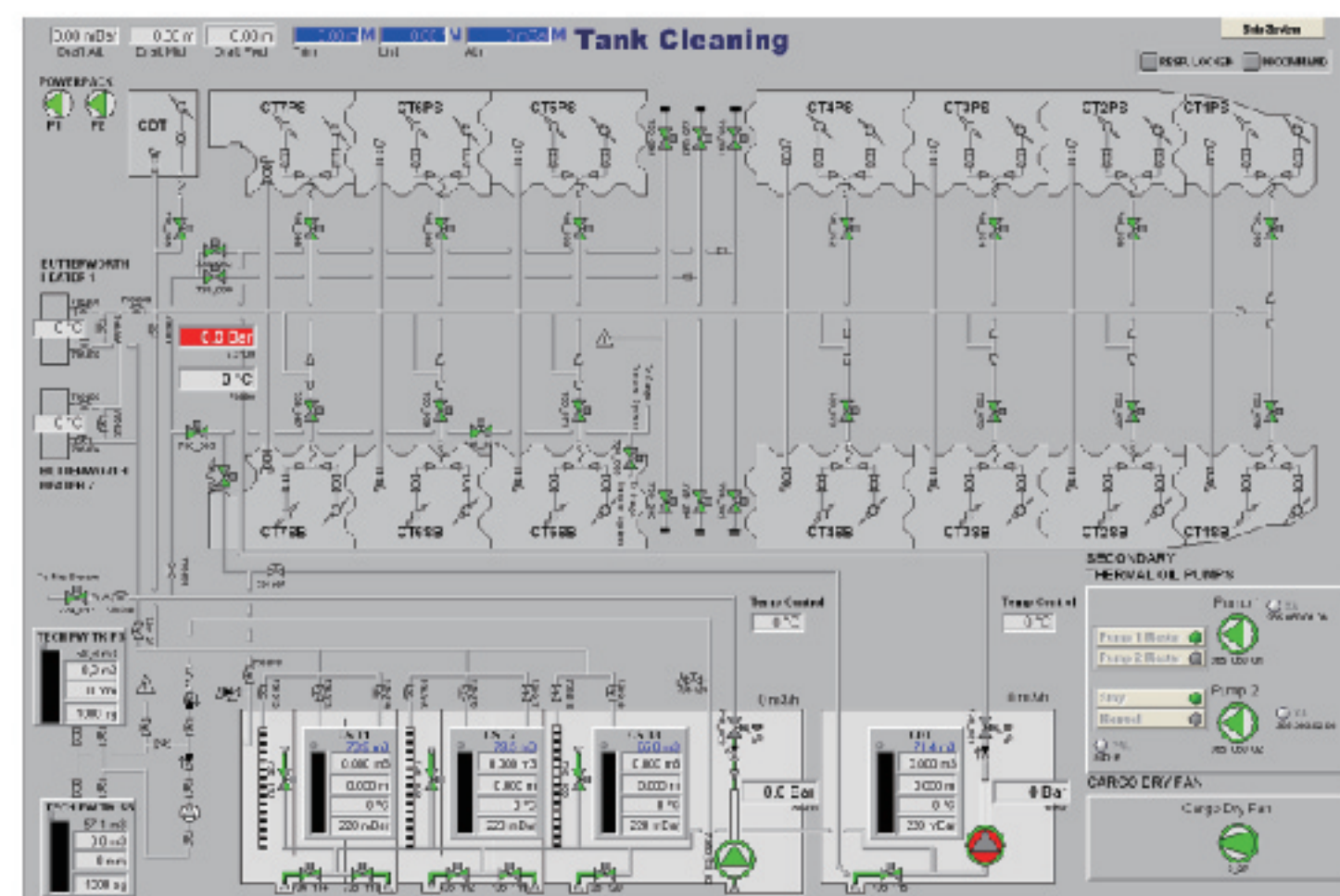
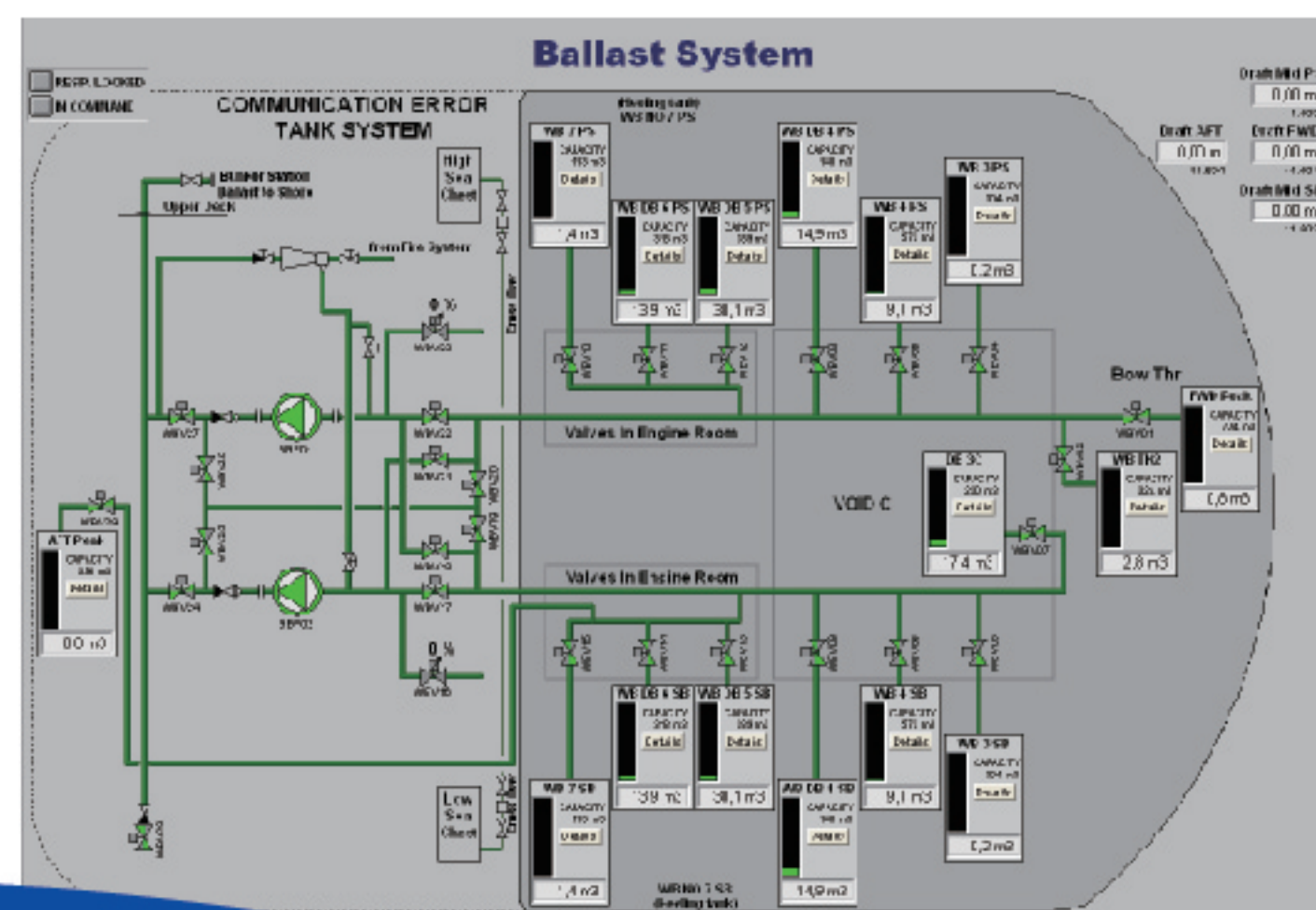




We have taken a great pride in making advanced, reliable and user friendly tank monitoring systems. Our core competence is in our know-how and experience. Our core competence is high quality, reliable systems with main focus on functionality, availability and low maintenance cost, all of particular importance for the end user.



Besides tank monitoring system our scope of supply also include electro pneumatic level gauging system, integrated tank monitoring and valve control system, water ingress system as well as pressure transmitters, temperature sensors and level switches.





Nor-Marine



Ningbo Factory
No.232 Danyang Road,Economy Development
Zone,Xiang shan,Ningbo,zhejiang,China, 315700
Tel: +86 574 89507501
Fax: +86 574 89507505
E-mail: info@normarine.cn
Web: www.nor-marine.cn

Shanghai Office
Room 605,No 777,Zhaojiabang Road
Shanghai,China 200032
Tel: +86 21 54060970
Fax: +86 21 54060971
E-mail: info@normarine.cn
Web: www.nor-marine.cn